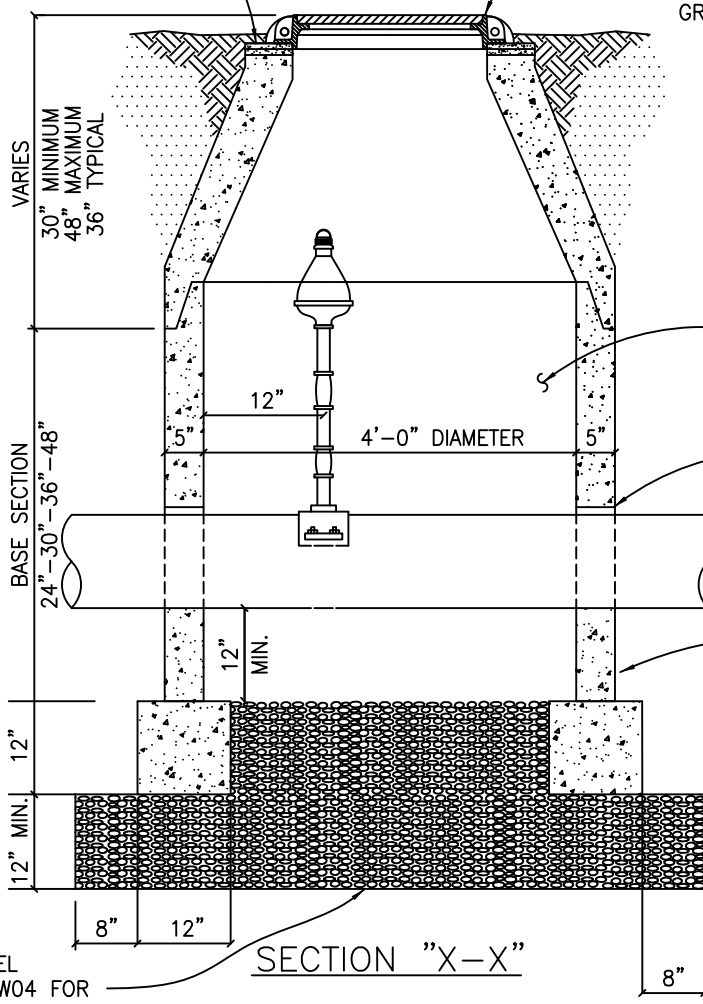


NOTE: PLAN VIEW SHOWN ONLY FOR CLARIFICATION OF SECTION "X-X" AND "Y-Y"

PLAN

ADJUST WITH GRADE RINGS AND MORTAR TO BRING TO 4" ABOVE GRADE (2 COURSES MIN. AND 5 COURSES MAX.)

FRAME AN COVER SHALL BE EAST JORDAN IRON WORKS (AS PER DETAIL WW09) OR APPROVED EQUIVALENT AND SHALL BE 4" ABOVE FINISH GRADE.



VARIABLES  
30" MINIMUM  
48" MAXIMUM  
36" TYPICAL

BASE SECTION  
24" - 30" - 36" - 48"

12" MIN.  
12"

SECTION "X-X"

3/4" WASHED GRAVEL (SEE COH DETAIL WW04 FOR SPECIFICATIONS)

INTERIOR COATING PER WW04 NOTE #4

4" ALL AROUND OPENING SEAL WATER TIGHT WITH NON-SHRINKING WATERPROOF GROUT.

OPENING PER PIPE SIZE ON PLANS

STANDARD PRECAST MANHOLE CONFORMING TO CITY OF HUTTO SPECIFICATIONS



**CITY OF HUTTO**  
 CONSTRUCTION STANDARDS AND DETAILS  
**STANDARD AIR RELEASE VALVE FOR FORCE MAINS**  
 ENGINEERING & PUBLIC WORKS

DRAWING NO.	WW14
UPDATED:	04/01/2019
DRAWN BY:	BB
SCALE:	N.T.S.
FILE NAME:	WW14.DWG