

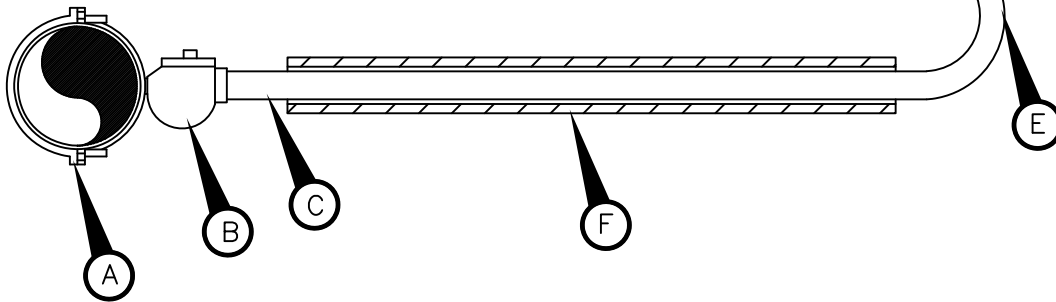
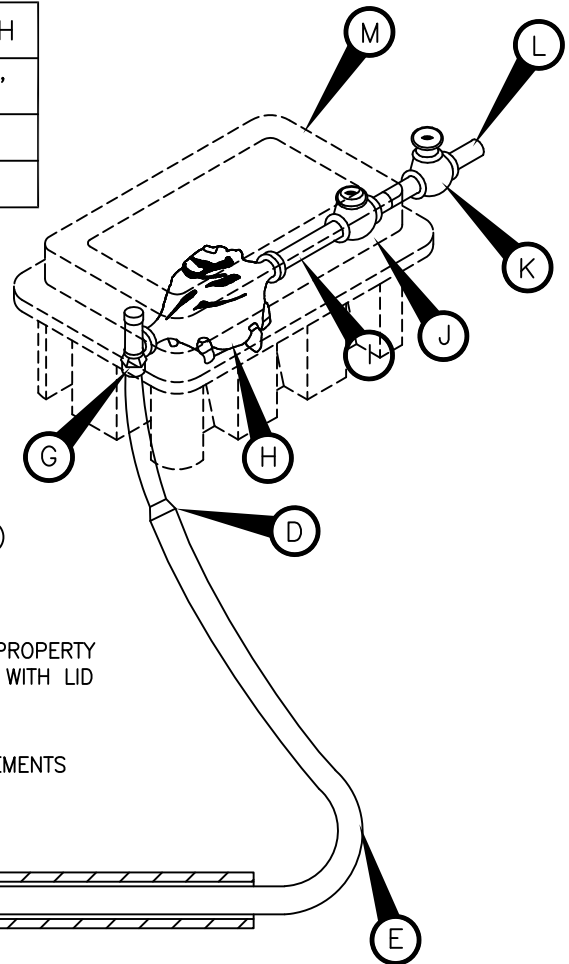
METER SIZE	LENGTH
5/8"	7 3/4"
3/4"	9"
1"	11"

**MATERIAL LIST:**

- A. EPOXY COATED STAINLESS STEEL STRAP SADDLE, JCM OR SMITHBLAIR
- B. 1 1/2" FORD BRASS FB1100-6-G CORPORATION STOP
- C. 1 1/2" POLYETHYLENE SDR 9, CLASS 200 TUBING
- D. FORD BRASS C84-34G COMPRESSION BY MALE REDUCING ADAPTER, OR CITY ENGINEER APPROVED EQUAL
- E. 1" POLYETHYLENE TUBING SDR 9, CLASS 200
- F. PIPE CASING WHERE APPLICABLE (SEE DETAIL W26)
- G. FORD BRASS BA13-332W ANGLE STOP

(H-L TO BE INSTALLED UNDER SEPARATE BUILDING PERMIT):

- H. WATER METER, PROVIDED BY CITY (SEE FEE SCHEDULE FOR COST)
- I. WATER METER COUPLING; MALE IPT X SWIVEL COUPLING NUT:  
-FOR 5/8" AND 3/4" METERS: 3/4" X 8 1/2" LONG  
-FOR 1" METERS: 1" X 8 1/2" LONG
- J. BRONZE GATE VALVE: NON-RISING SETM (3/4" OR 1") FEMALE IPT (PROPERTY OWNER'S CUT-OFF OUTSIDE METER BOX IN SEPARATE VALVE CAN WITH LID AS PER CITY STANDARDS)
- K. 3/4" PRESSURE REDUCING VALVE
- L. 3/4" OR 1" PIPE MEETING CITY OF HUTTO PLUMBING CODE REQUIREMENTS
- M. PLASTIC RECTANGULAR METER BOX AS NOTED ON DETAIL W04



**NOTES:**

1. SERVICE PIPE SHALL BE 200 PSI BLACK COLORED POLYETHYLENE HAVING A DIMENSION RATION OF (DR9).
2. SERVICE SADDLES SHALL BE WRAPPED COMPLETELY WITH 8 MIL. POLYETHYLENE FILM.
3. TOP OF BOXES SHALL BE 1" ABOVE FINISHED GRADE.
4. PIPING AND TUBING SHALL BE INSTALLED IN ACCORDANCE WITH THE CITY OF HUTTO ENGINEERING MANUAL AND CITY OF HUTTO APPROVED SPECIFICATIONS.
5. METER BOX TO BE MODEL DFW38C-KSBSM BY DFW PLASTICS, INC. OR CITY ENGINEER APPROVED EQUAL. PROVIDE BLACK-PAINTED METAL LID WITH METER READER.
6. AXIS OF METER ASSEMBLY (METER STOP, METER, PIPING AND OWNER'S CUTOFF) SHALL BE TEN INCHES (10") BELOW TOP OF BOX.
7. SLOTS PROVIDED IN METER BOX TO ACCOMMODATE PIPING INTO AND OUT OF BOX SHALL NOT BE MODIFIED.
8. INSERT STIFFENERS AT COMPRESSION FITTINGS SHOULD BE CTS-STAINLESS STEEL 6133-T FITTINGS OR CITY ENGINEER APPROVED EQUAL.
9. ALL PARTS TO BE AS NOTED OR CITY ENGINEER APPROVED EQUAL.



**CITY OF HUTTO  
CONSTRUCTION STANDARDS AND DETAILS**

**1", 3/4" OR 5/8"  
SINGLE METER  
ENGINEERING & PUBLIC WORKS**

DRAWING NO. W24

UPDATED: 04/01/2019

DRAWN BY: BB

SCALE: N.T.S.

FILE NAME: W24.DWG